

Public Health in Lewisham

Returning Public Health to its
Civic Roots

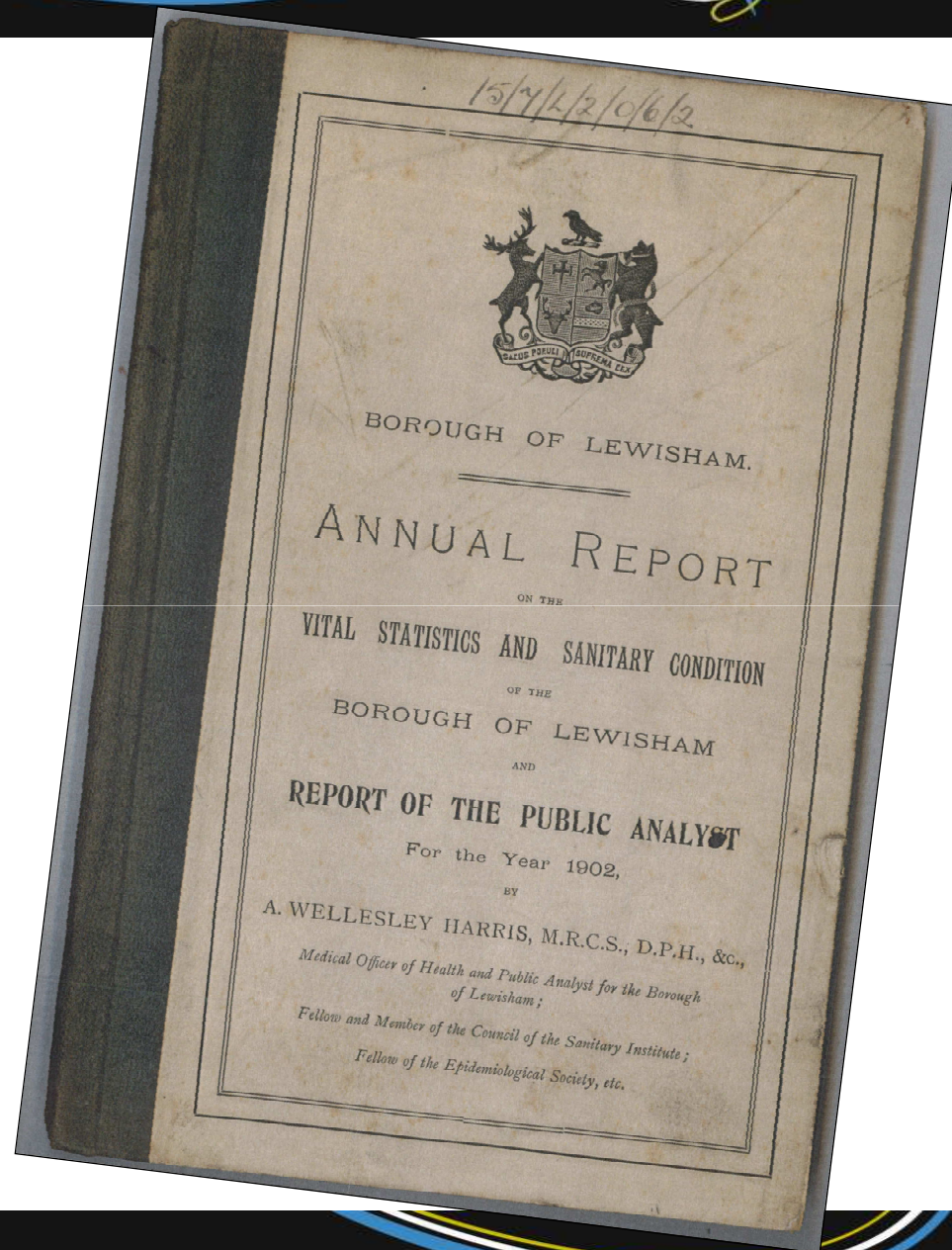


The profession of public health began in local authorities



Early 1900s

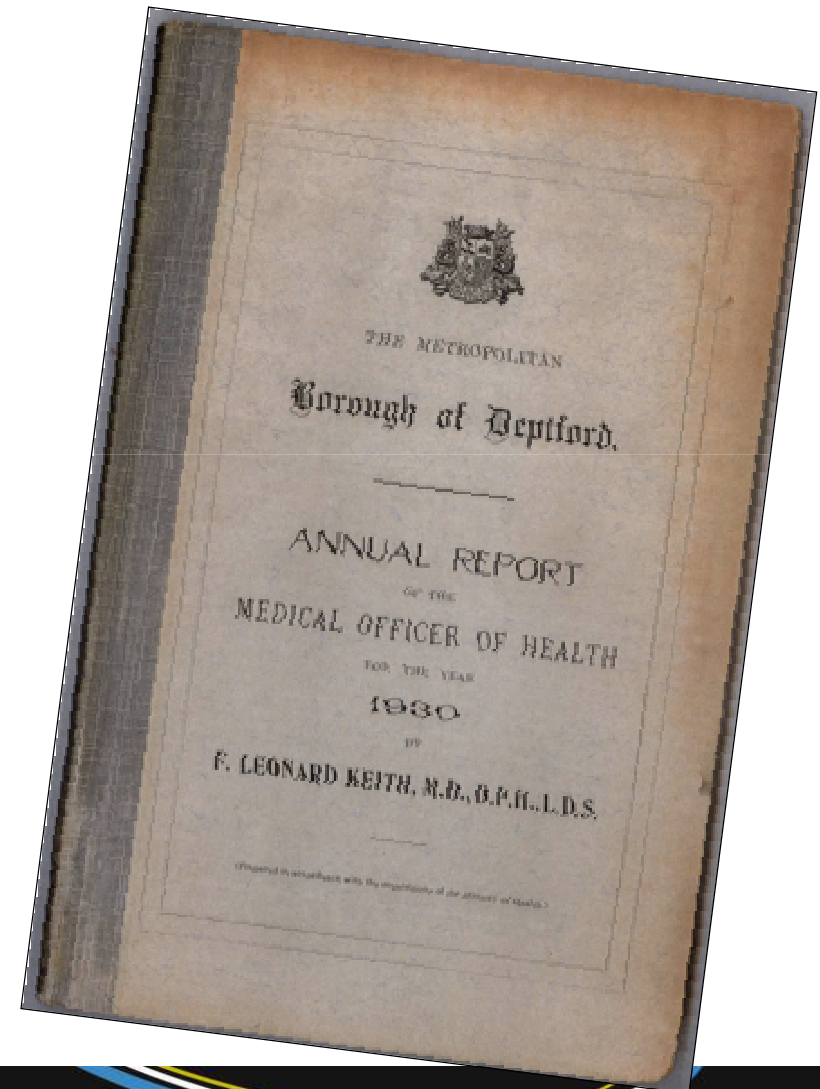
- **Infectious diseases major cause of death**
- **23.5% all deaths under 1 year**



1930s

Emergence of Chronic Non-infectious Disease

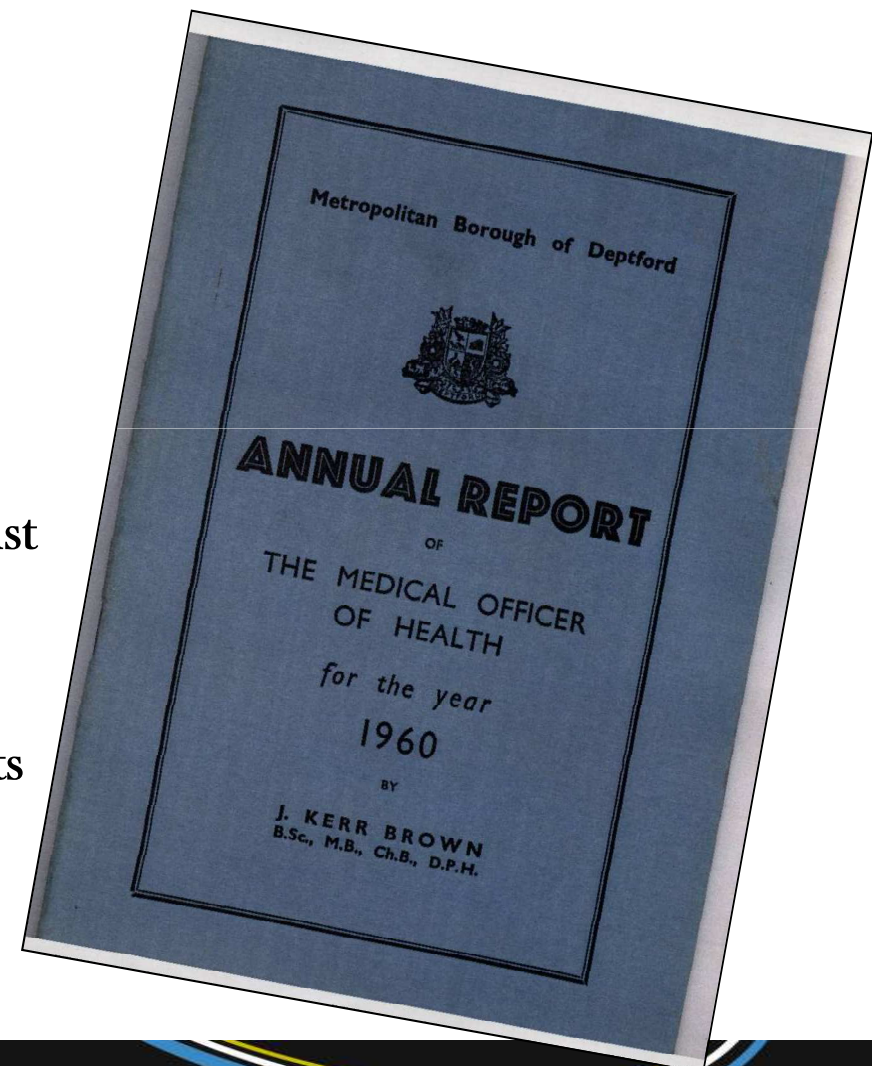
“The former preponderance of death from respiratory disease (largely due to the then high TB mortality) has given place to diseases of the heart and blood vessels. Heart disease has established itself firmly as the commonest single cause of death.”



1960 – 70s

Emerging Evidence for Lifestyle Risk Factors

“Advice to stop smoking has now been given by such an influential body as the Royal College of Physicians, and so the gist of their advice is modestly repeated here: **SAVE YOUR HEALTH, YOUR FAMILY, YOUR POCKET** ... by giving up smoking. That is what it really amounts to.”



**In the last ten years there's
been a re-focus by the
public health service on
health improvement,
prevention, and tackling
causes of ill health**



Choosing Health: Making Healthy Choices Easier

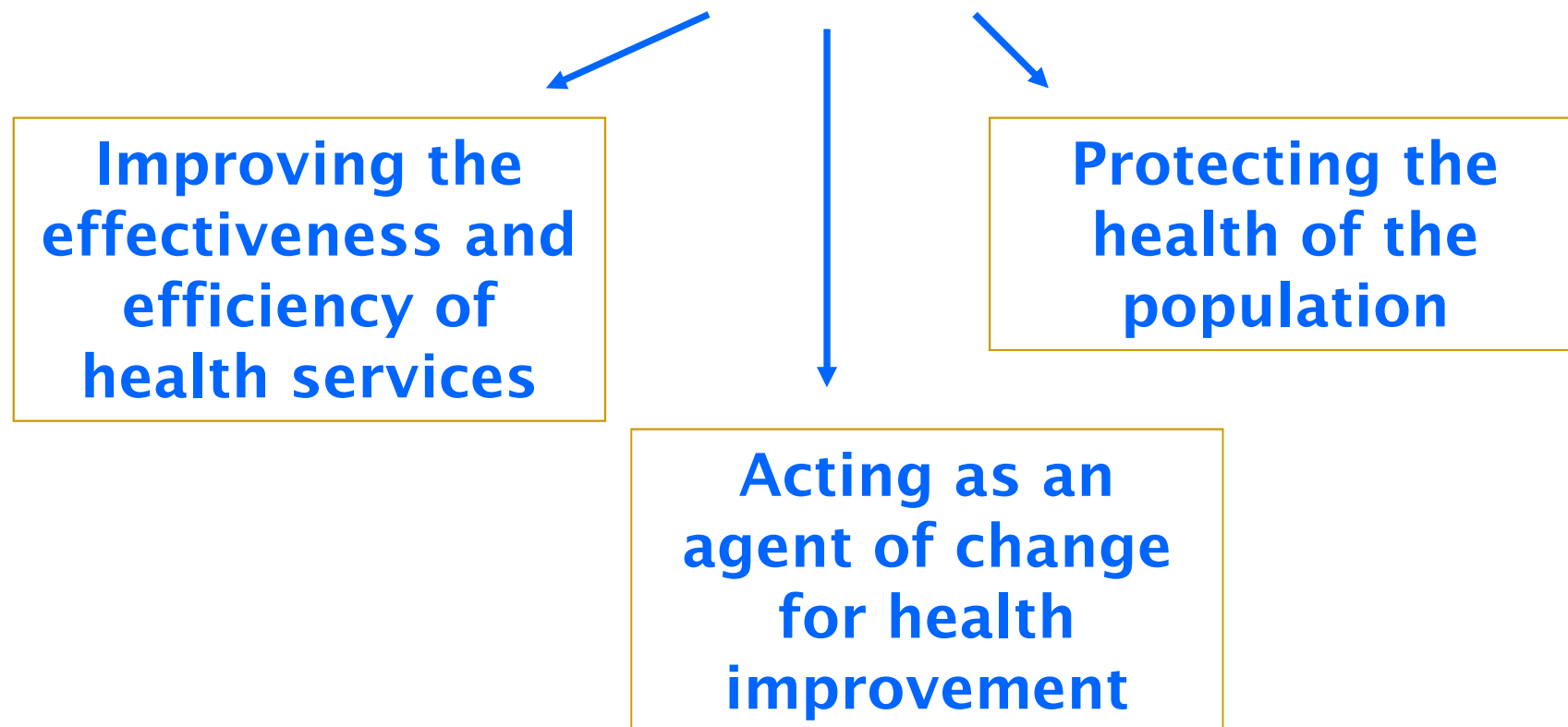


Now, 'Healthy Lives, healthy People' proposes radical change to public health funding, commissioning and provision in England

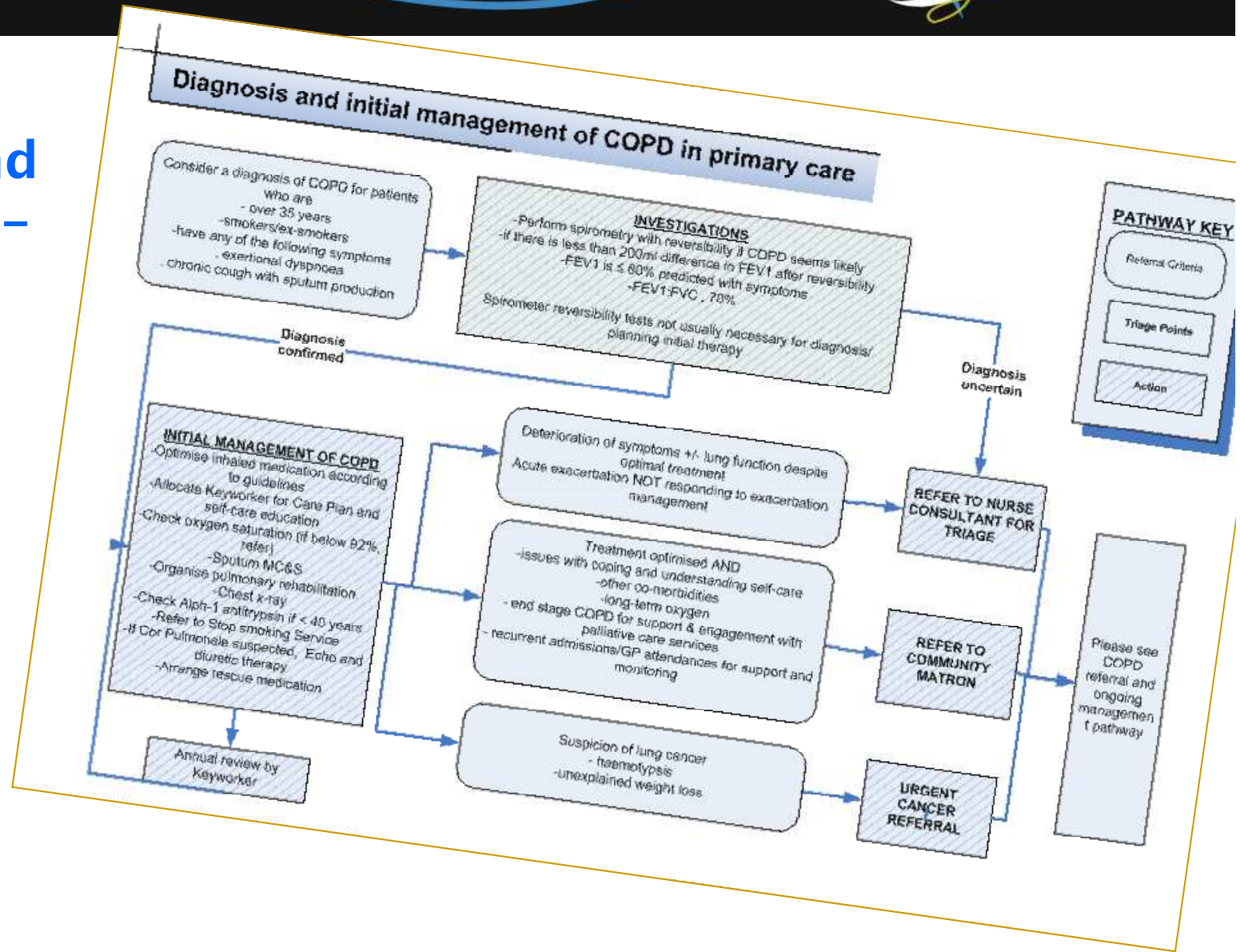


Public Health in 2011

What are the key functions of Public Health?



System and service re-design



Commissioning health improvement interventions



Developing and implementing plans to change lifestyle and behaviour

SMOKEFREE LEWISHAM

accessibility help | print page | bookmark page | site map

text us **07522 679 249** freephone **0800 0820 3**

HOME | HELP FOR YOU | SUPPORT & ADVICE | SMOKING & PREGNANCY | EVENTS | TIPS | SUCCESS STORIES | PARTNERS | CONTACT US

Welcome to the Lewisham NHS Stop Smoking Service website where you can find out everything you need to know on how we can help you to stop smoking.

Read my story

Read my story

Read my story

Read my story

What's happening: The Tackle Smoking Campaign with Millwall FC

Thinking about quitting?

- Ways to stop smoking
- Help in my area
- Speak to a trained advisor
- Benefits of giving up

Ready to give up?

- Smoking and pregnancy
- Tips to help you give up
- What should you expect
- Frequently asked questions

SMOKEFREE Lewisham NHS CANCER RESEARCH UK ash. action on smoking and health British Heart Foundation Lewisham DH Department of Health

**Empower
communities
to improve
their own
health**



**Participatory budgeting in
North Lewisham**

Commissioning and delivering immunisation and vaccination programmes

Lewisham SHIELD
NHS Lewisham
Issue 1: February 2011

Vaccinating 95% will protect our children

Welcome to the first edition of *Lewisham Shield*, a new quarterly newsletter helping to keep immunisers in our borough up-to-date with the Lewisham immunisation programme, as well as including news, best practice and a look at some of the data collected locally and nationally. In 2009-10, the Care Quality Commission's review of Immunisation targets revealed that Lewisham was the fifth-worst performing PCT in London, and London was one of the worst performing Health Authorities. So it has never been more important to keep driving forwards with our joint efforts to deliver greater coverage of childhood immunisations in the borough.

One of the key issues all trusts face is that we have the recommended ages for childhood immunisations, but also reporting ages - where the immunisation data is submitted to the Department of Health (COVER data, in some cases submitted up to a year after recommended age of immunisation) - plus another age cohort and standard at which general practices receive their performance payments for immunisation. At every opportunity Lewisham has fed back to the Department of Health that these discrepancies divide the different aspects of immunisation care and need to be united into one, single performance reporting standard. Until this is addressed at a national level, we want to take every opportunity to urge immunisers and local practice managers to immunise and chase up unimmunised children as early as possible. This will help reduce the risk of disease outbreak and protect the younger, more vulnerable members of our community.

Some countries have all but eradicated measles, but in the UK and Europe we are still reporting cases and seeing local outbreaks like the London measles epidemic in 2008. On Page 5 the Health Protection Agency presents

the numbers of recorded cases of confirmed and suspected measles and mumps during 2010. Sadly measles, like other preventable childhood diseases, can still result in fatalities despite the best medical care. By setting out clearly our vision for immunisations in Lewisham and taking you step-by-step through our programmes of work, we hope that you will recognise that immunisation is everyone's business and join us in our efforts to shield local children from preventable diseases.

Donal O'Sullivan
Consultant in Public Health Medicine

Michael Corr
Immunisation Co-ordinator

LH.immunisation@nhs.net

Our vision for immunisations in Lewisham

We want to protect every child and every adult in Lewisham against preventable diseases

We will do this by creating herd immunity against childhood diseases, and by implementing effective screening and immunisation programmes for flu, rubella, hepatitis B, and tuberculosis.

We recognise that after clean water, vaccination is the most effective public health intervention in the world for saving lives and promoting good health.

IMMUNISE
The safest way to protect your child

Public Health in Lewisham

Returning Public Health to its
Civic Roots

